

**ADVANCING COMMUNITY  
TRANSFORMATION  
BY HELPING CHURCHES  
SERVE LOCAL SCHOOLS**



🐦 [twitter.com/lovinghouston](https://twitter.com/lovinghouston)  
📘 [facebook.com/lovinghouston](https://facebook.com/lovinghouston)  
💬 [info@lovinghouston.net](mailto:info@lovinghouston.net)

**LOVINGHOUSTON.NET**



**IMPACT REPORT**  
*Affirmation & Collaboration*



"Loving Houston is truly advantageous to our district. For years, we have been doing breakfasts and gatherings with faith leaders. Loving Houston has helped to organize the conversation and has provided a framework that will work. Loving Houston isn't bringing a model about feeling good; Loving Houston is bringing a model about *doing* good. Every school needs Loving Houston."

— LAWRENCE ALLEN, HOUSTON INDEPENDENT SCHOOL DISTRICT AND TEXAS STATE BOARD OF EDUCATION

*There is much to celebrate—but there is more work to be done.*

OUR VISION IS TO SEE EVERY SCHOOL IN GREATER HOUSTON WITH A COMMITTED CHURCH PARTNER



**WILL *you* HELP US MAKE THIS A REALITY?**

» **HOW YOU CAN HELP:**

- Start a church-school partnership
- Volunteer with Loving Houston
- Introduce us to church leaders and church networks
- Give financially
- Pray for Loving Houston, and for children's lives to be transformed because of the faithful service of churches across Greater Houston

Find more information at:  
**[lovinghouston.net/getinvolved](http://lovinghouston.net/getinvolved)**

*"And let us consider how we may spur one another on toward love and good deeds"*

**HEBREWS 10:24**

Loving Houston is a 501(c)3 charity. Tax-deductible contributions can be made at **[lovinghouston.net/donate](http://lovinghouston.net/donate)**



# AFFIRMATION

## What they're saying...

"I have been thoroughly impressed with the way Loving Houston prepares people to step in to effectively serve in local schools. Loving Houston has recently joined Chapelwood to ensure every campus in Spring Branch ISD has a well-trained church partner serving for the transformation of the community one child at a time. I look forward to seeing how God intends to bless this community through this partnership in the years to come."

—Josef Klam, Chapelwood United Methodist Church

"Loving Houston is such an important piece of helping us all be a community together. When they say it takes a village to raise a child, it truly does take a village—and Loving Houston is helping bring that village together."

—Bobbie Swaby, Principal

"Are churches allowed to serve schools? Yes! We welcome you with open arms!"

—Jerri Monbaron, Humble ISD

"CEPC's new school partnership is definitely to the Glory of God! We are now serving our new school and developing relationships with the principal, teachers, students, and school district in ways never imagined one year ago. We would not be here without the help and continued support of Loving Houston."

—Lori Petittlerc, Christ Evangelical Presbyterian Church

"We're not asking for money. We need people. We need relationships. I need a person for every child."

—Clayton Crook, Principal

"Thank you for showing the love of Christ and being a light to the communities."

—Ana Santiago, Social Worker

"We want churches to come alongside our schools and ask how they can serve."

—Pamela Shaw, Fort Bend ISD



# COLLABORATION

We are so grateful for the relationships we developed this year. Our collaborative efforts with:

HOUSTON ISD

HUMBLE ISD

FORT BEND ISD

KLEIN ISD

LAMAR CONSOLIDATED ISD

SPRING BRANCH ISD

UNION BAPTIST ASSOCIATION

CHRIST TOGETHER FORT BEND

CATHOLIC CHARITIES

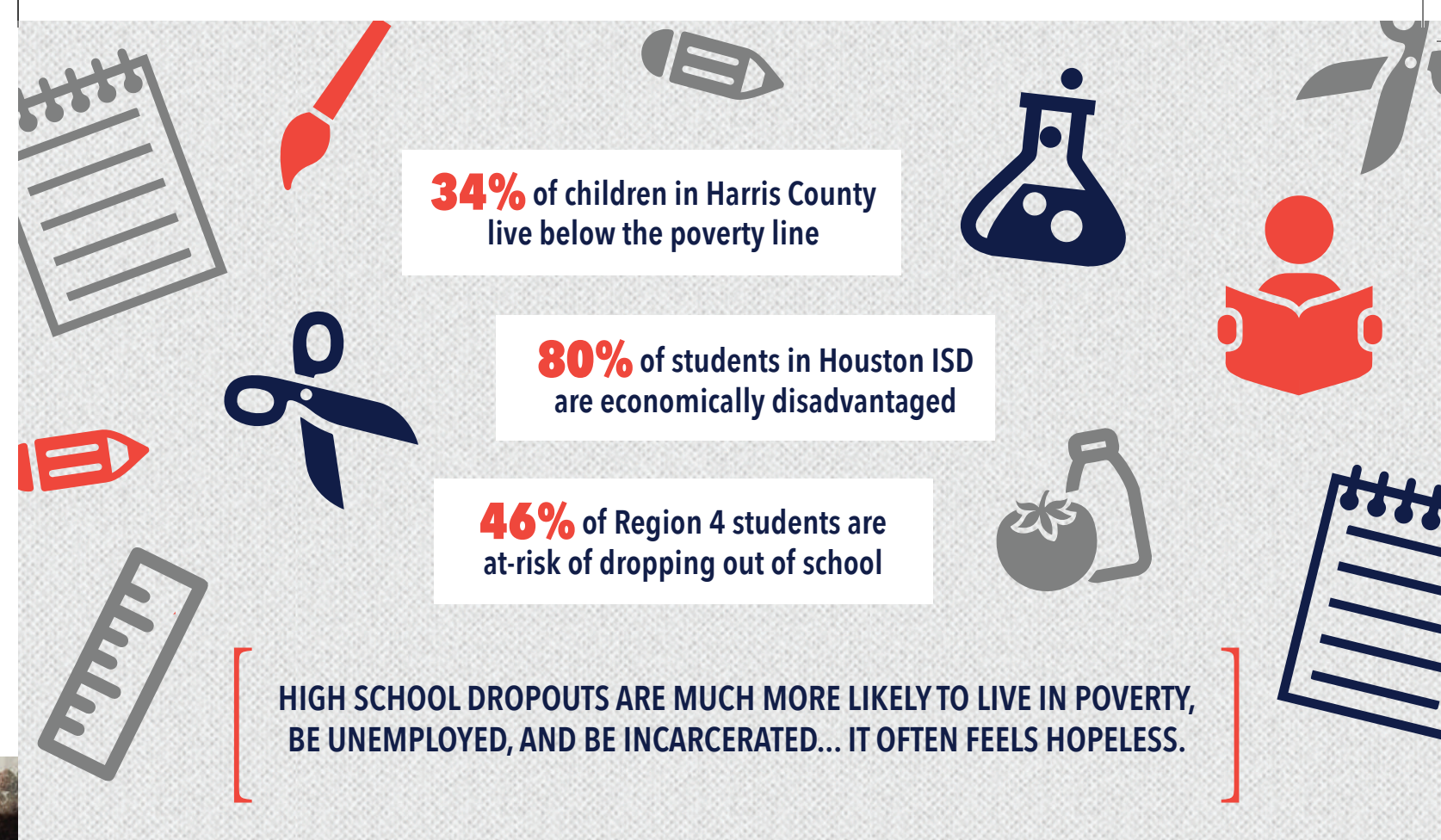
HOUSTON CHURCH PLANTING NETWORK

COMMUNITIES IN SCHOOLS

CHILDREN AT RISK

...and more were instrumental in our impact in 2016 and will be foundational to our work for years to come.

**IMPACT** We have also been encouraged by the impact of our new and expanded church-school partnerships. Schools have reported a positive effect on academic performance, school morale, and student behavior. Churches have been encouraged by the number of volunteers stepping up to use their gifts and resources. And volunteers' lives have been changed as they obey Jesus' commands to love their neighbors and care for those in need. What a blessing it is to be involved in this mutually transformational work!



## WHAT IF...

What if every school in Greater Houston knew that the church down the street was committed to helping their students thrive?

What if every church in Greater Houston opened its doors, went out into the local community, and joined hands with educators and community leaders to work together for the good of our local school children?

"By this everyone will know that you are my disciples, if you love one another"

JOHN 13:35

The 4,000 churches in Greater Houston have an extraordinary opportunity to make a difference in the lives of these children, and Loving Houston has been helping to turn this opportunity into a reality.

**LOVING HOUSTON IS ADVANCING  
COMMUNITY TRANSFORMATION  
THROUGHOUT GREATER HOUSTON BY  
HELPING CHURCHES SERVE LOCAL SCHOOLS**



LOVING HOUSTON  
EQUIPPED **154**  
CHURCHES TO  
SERVE THEIR  
LOCAL SCHOOLS

LOVING HOUSTON  
FACILITATED **16**  
WORKSHOPS HOSTED  
BY CHURCHES, CHURCH  
NETWORKS, AND  
SCHOOL DISTRICTS

**17** SCHOOLS  
WERE CONNECTED  
WITH A NEW  
CHURCH PARTNER

# 2016 year in review

## TOTALS FOR 2015 - 2016:

**20** Workshops  
**181** Churches equipped  
**25** Schools connected  
with a new  
church partner

*Thousands of students, parents,  
teachers, and administrators across  
Greater Houston are experiencing  
the love of Jesus—many for the  
first time—because of the faithful  
service of our local churches.*

"Even for those kids who don't have mentors  
one-on-one for themselves, that ripple effect  
definitely plays out because all the kids in  
the school see volunteers walking through  
their doors every week caring about them as a  
collective school community."

—LINDA BUCHMAN, SPRING BRANCH ISD

## LOVING HOUSTON HAS HELPED START **25** NEW CHURCH-SCHOOL PARTNERSHIPS\*

### ALIEF ISD

SCHOOL: Liestman Elementary  
CHURCH: Agape Bible Church

SCHOOL: Youngblood Int. Middle  
CHURCH: Agape Bible Church  
PARTNERSHIP ACTIVITIES: After-school care  
for homeless children

### CY-FAIR ISD

SCHOOL: Adam Elementary  
CHURCH: Cy-Fair Christian Church  
PARTNERSHIP ACTIVITIES: Grounds Clean-Up

SCHOOL: Campbell Middle  
CHURCH: Westway Baptist Church

SCHOOL: Lamkin Elementary  
CHURCH: Cypress Community Church  
PARTNERSHIP ACTIVITIES: Teacher  
Support & Appreciation

### FORT BEND ISD

SCHOOL: Mary Austin Holley Elementary  
CHURCH: Christ United Methodist Church -  
Sugar Land

SCHOOL: McAuliffe Middle  
CHURCH: Fort Bend Community Church  
PARTNERSHIP ACTIVITIES: Tutoring, School  
Activity Support

SCHOOL: Willowridge High  
CHURCH: Second Baptist Church - Pearland  
PARTNERSHIP ACTIVITIES: Renovations,  
Sports Teams Support

### HOUSTON ISD

SCHOOL: Blackshear Elementary  
CHURCH: The Church at UH  
PARTNERSHIP ACTIVITIES: Tutoring, Prayer,  
Community Garden

SCHOOL: Codwell Elementary  
CHURCH: Gateway Community Church  
PARTNERSHIP ACTIVITIES: Teacher Support &  
Appreciation, School Activity Support

SCHOOL: J.R. Reynolds Elementary  
CHURCH: Blueridge United Methodist Church

SCHOOL: MacGregor Elementary  
CHURCH: South Main Baptist

SCHOOL: Walnut Bend Elementary  
CHURCH: Ascension Episcopal Church  
PARTNERSHIP ACTIVITIES: Making It Better  
programs

SCHOOL: Woodson K-8 Academy  
CHURCH: Gateway Community Church, Great-  
er Saint Matthew Baptist Church  
PARTNERSHIP ACTIVITIES: Mentoring

### HUMBLE ISD

SCHOOL: Humble High  
CHURCH: Light of the World Christian  
Fellowship  
PARTNERSHIP ACTIVITIES: Mentoring

### KLEIN ISD

SCHOOL: Roth Elementary  
CHURCH: Northside Christian Church  
PARTNERSHIP ACTIVITIES: Kids Hope Men-  
toring, School Supply Drives, Watch Dogs, School  
Activity Support

### LAMAR CONSOLIDATED ISD

SCHOOL: Smith Elementary  
CHURCH: St. John's United Methodist Church  
PARTNERSHIP ACTIVITIES: Tutoring, Teacher  
Support & Appreciation, Food Drive

SCHOOL: Stephen F Austin Elementary  
CHURCH: Wellspring Church International  
PARTNERSHIP ACTIVITIES: Tutoring, Teacher  
Support & Appreciation

SCHOOL: TL Pink Elementary  
CHURCH: The Bridge Fellowship  
PARTNERSHIP ACTIVITIES: Mentoring, Holiday  
Parties, Teacher Support & Appreciation

### NEW CANEY ISD

SCHOOL: Valley Ranch Elementary  
CHURCH: Dayspring Church  
PARTNERSHIP ACTIVITIES: Financial Support,  
Parent Engagement

### SPRING ISD

SCHOOL: Salyers Elementary  
CHURCH: Holy Comforter Episcopal Church  
PARTNERSHIP ACTIVITIES: Mentoring

### SPRING BRANCH ISD

SCHOOL: Cedar Brook Elementary  
CHURCH: Christ Evangelical Presbyterian Church  
PARTNERSHIP ACTIVITIES: Teacher  
Support & Appreciation

SCHOOL: Woodview Elementary  
CHURCH: St. Francis Episcopal Church  
PARTNERSHIP ACTIVITIES: CIS Reading  
Buddies, Uniform Vouchers, Book & Clothing  
Drives, Teacher Support & Appreciation

### TOMBALL ISD

SCHOOL: Decker Prairie Elementary  
CHURCH: Graceview Baptist Church - Tomball  
PARTNERSHIP ACTIVITIES: Teacher Support &  
Appreciation, School Activity Support

SCHOOL: Wildwood Elementary  
CHURCH: Graceview Baptist Church - Tomball  
PARTNERSHIP ACTIVITIES: Teacher Support &  
Appreciation, School Activity Support

🚩 : New 2016 Partnership

\* As of November 20, 2016

